

**Spiritual Life Center
Annual Meeting Agenda
May 21, 2023 – 1:00 to 2:30 p.m.
Sacramento, California**

- 1. Welcome** Josie Johnson, Board President
- 2. Pray In** Reverend James Trapp, Senior Minister
- 3. Introductions** Board of Trustees
- 4. Acknowledgement of Past President Sally Scion** Josie Johnson, Board President
- 5. Introduction of Board** Rev. Penelope "Penny" Clement, Board Trustee Recruitment Committee Chair
- 6. Board of Trustee Election In-Person & Online** Claudia Norton, Donna Sturla, and Volunteer Governing Members
- 7. Accomplishments** Reverend James Trapp
- 8. Town Hall Topics Update** Deborah Moskovitz, Board Secretary
- 9. 2022 Year End Financial Results /Current Financial Situation & Action Plans** Elaine Laroa, Operations & Finance Manager for Board Treasurer Carole Mercer
- 10. Charitable Giving of Real Estate Opportunity** – Claudia Norton
- 11. Election Results** – Reverend Penny Clement
- 12. Questions & Answers** – All In-Person and Online Attendees
- 13. Gratitude, Pray Out, and Adjournment**– Reverend James Trapp



The Mission of the Abundant Community Team (ACT)

Revised May 21, 2023

The Mission of the Abundant Community Team (ACT) is to further Spiritual Life Center's mission to transform lives by holding the consciousness of abundance for Spiritual Life Center's community including the board, staff and all affinity groups. As the Central Clearing House for our spiritual cooperative, the ACT coordinates, communicates, promotes, supports, and provides opportunity for representation for all voices.

Coordinate

ACT will coordinate the scheduling of events, programs and activities on SLC's master calendar.

Communicate

ACT will facilitate communication among all groups.

Promote

ACT will facilitate promotion of all group events, programs and activities through SLC's marketing channels.

Supports

ACT will communicate any need for financial, training or volunteer support to the appropriate staff or committees.

Representation

The Abundant Community Team coordinates the needs of all leader(s) or appointed representative(s) from the Board, Board Committees, Office Teams, board approved and funded Branches & Programs, community Small Groups, FUNdraisers, Life Events, and Rental Agreements.

Board Committees - *accepting applications from Governing Members

Board of Trustees – 4th Thursday of Every Month, 5 pm to 8 pm

*Finance Committee – 3rd Tuesday of Every Month, 2:30 to 4:00 pm

Facilities Committee – 1st Monday of Every Month, 6 to 7:30 pm

*Abundant Community Team – Weekly on Wednesdays from 1 to 3 pm

Thrive Committee – Strategically Plans for Financial Sustainability & Membership Growth – Senior Minister and Chairs of Finance, Membership and Fundraising and Staff Liaisons (Meets as Needed)

Marketing Committee – (Pending Budget Funds for Marketing & Outreach)

*Membership/Welcome Committee – (Meets As Needed)

Ad Hoc New Board Trustee Recruitment Committee (Meets As Needed)

Office Teams (Paid Staff, Contractors, and Volunteer Team Members)

Senior Management (Rev. James Trapp, Rev Deborah Phillips, Paula Mandella, & Elaine Laroa)

Ministry Team (Rev James Trapp, Rev Deborah Phillips, & Paula Mandella)

Production/Livestream Team (Paula Mandella, Rev. Deborah Phillips, Ira Mandella, & Cameron Lawson)

Podcast Teams (Rev. Deborah Phillips, Cameron Lawson, & Ira Mandella)

Accounting Team (Elaine Laroa, Randy Sizemore, Nancy Hilton, & Cian Chatten)

Administration Team (Elaine Laroa, Pat Harvey, Nancy Hilton, Patty Peters, Corrinne Fryer, & Cian Chatten)

Facilities Maintenance & Logistics (Elaine Laroa, Pat Harvey, Michael Keehn, Rick Saccone, Leslie Mango, and George Peckham)

Youth Education Office Team (Rev. Janee Marth & Elaine Laroa)

Branches of our SLC Family Tree (Requires Human or Financial Resources)

Sunday Experience & Special Services

Music & Arts (Vacant Positions)

WOW Wednesday Services

Weekly Community Meals

Interfaith Explorers

Weekly Podcasts

Youth & Family Programs (Vacant Positions)

Chaplains Program

Community Giving Program

Fall Faith-In-Action

Adult Education (Vacant Position)

Events (Social Gatherings & Fundraisers) (Vacant Position)

Quantum Living Trainings

Coming Soon Spirit Groups (Vacant Position)

Current Small Groups

Raising Our Social Consciousness Book Club (Sundays, 1 to 3 pm on Zoom)

A Course in Miracles (Mondays, 6:30 to 8 pm on Zoom)

Spiritual Exploration Discussion (Tuesdays, 10-11:30 am beginning in June)

Co-Dependency Discussion Group (Tuesdays, 1 to 2:30 pm in-person)

Urantia Group (Wednesdays, 3 to 4:30 pm)

Power of Silence (Thursdays, 6 to 7 pm in-person and via Zoom – will be taking summer off beginning in June and restarting in September)

Women of Spirit (1st Saturday of Every Month – 10 to 12 noon in person or via Zoom depending on program)

Men of Spirit (3rd Saturday of Every Month – 9 to 11 am in person)

Spiritual Life Center Month of December 2022

Total Income: \$123,285

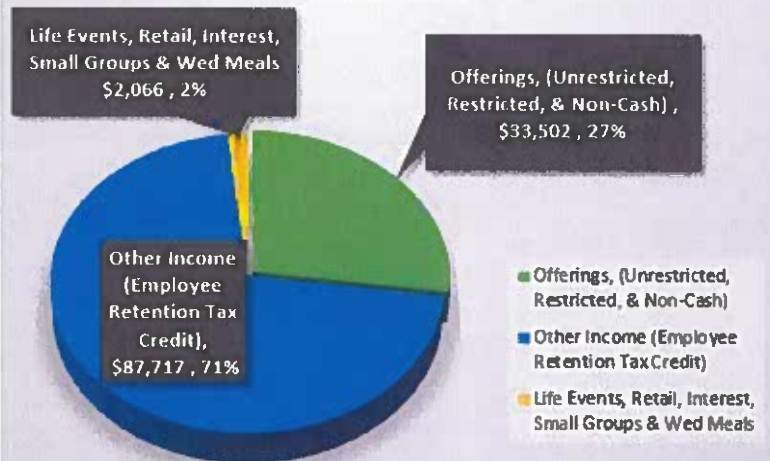
Total Expense: \$50,801*

Total Net Ordinary
Income: \$72,484**

*Includes \$1.5k Community Giving

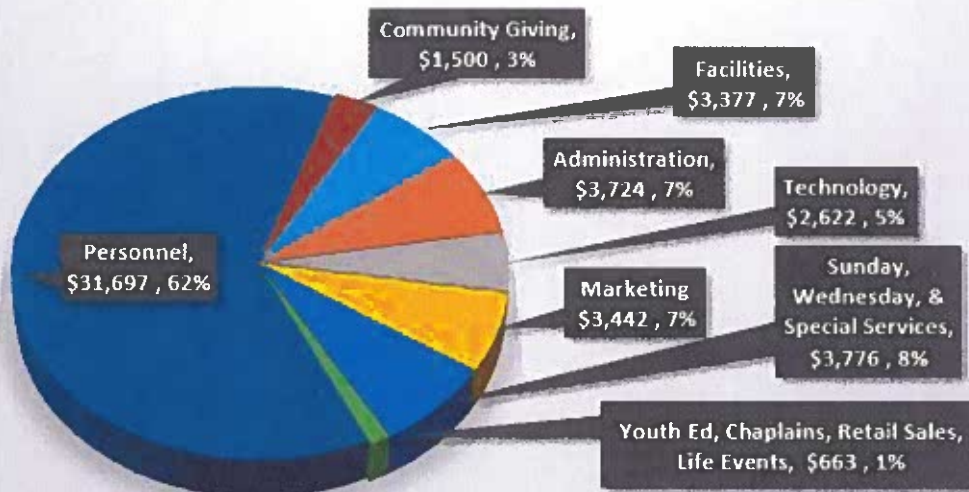
** Month of Dec 2022 Budget: \$5,139. Positive Net Ordinary Income for December was \$67,345 better than budgeted due to unbudgeted Other Income of \$87K from the IRS Employee Retention Tax Credit received first week of December 2022.

Spiritual Life Center Month of December 2022 Income



SLC Month of December 2022 Income	Actual	Percent
Offerings, (Unrestricted, Restricted, & Non-Cash)	\$ 33,502	27%
Other Income (Employee Retention Tax Credit)	\$ 87,717	71%
Life Events, Retail, Interest, Small Groups & Wed Meals	\$ 2,066	2%
Total Month of December 2022 Income	\$ 123,285	100%

Spiritual Life Center Month of December 2022 Expenses



SLC Month of December 2022 Expenses	Actual	Percent
Facilities	\$ 3,377	7%
Administration	\$ 3,724	7%
Technology	\$ 2,622	5%
Marketing	\$ 3,442	7%
Sunday, Wednesday, & Special Services	\$ 3,776	7%
Youth Ed, Chaplains, Retail Sales, Life Events	\$ 663	1%
Personnel	\$ 31,697	62%
Community Giving	\$ 1,500	3%
Total Month of December 2022 Expenses	\$ 50,801	100%

Spiritual Life Center Year-to-Date as of December 31, 2022

Total Income: \$518,219

Total Expense: \$509,857*

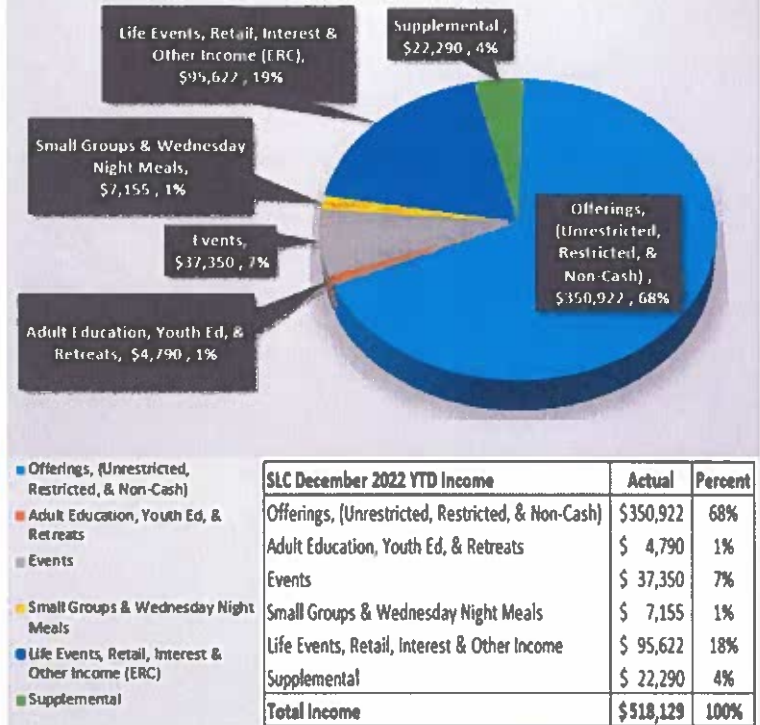
Total Net Ordinary Income: \$8,272**

*Includes \$18.5k Community Giving

** YTD Dec 2022 Budget: \$0. YTD income is \$8.2k better than budget due to IRS ERC grant of \$87.7k received in Dec.

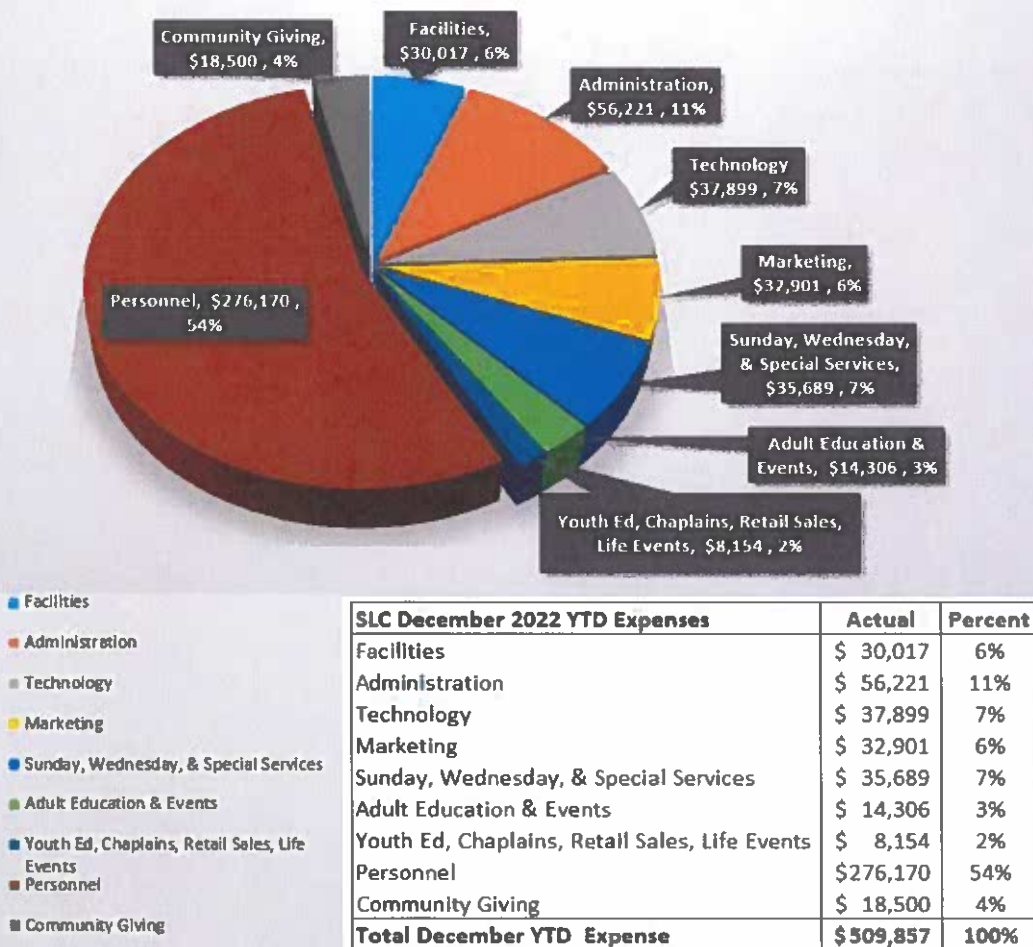
Without ERC income YTD Dec income would have been \$430,502 with Total Net Loss of (\$79,355). ERC helped to fund \$18.5k in Community Giving and \$60.8k in operational expenses leaving \$8.2k in profit
Thank You Universe for Dec ERC and for \$22k in Supplemental Donations and \$15k in loans paid back by year end.

Spiritual Life Center December 2022 Year-to-Date Income



SLC December 2022 YTD Income	Actual	Percent
Offerings, (Unrestricted, Restricted, & Non-Cash)	\$350,922	68%
Adult Education, Youth Ed, & Retreats	\$ 4,790	1%
Events	\$ 37,350	7%
Small Groups & Wednesday Night Meals	\$ 7,155	1%
Life Events, Retail, Interest & Other Income	\$ 95,622	18%
Supplemental	\$ 22,290	4%
Total Income	\$518,219	100%

Spiritual Life Center December 2022 Year-to-Date Expenses



SLC December 2022 YTD Expenses	Actual	Percent
Facilities	\$ 30,017	6%
Administration	\$ 56,221	11%
Technology	\$ 37,899	7%
Marketing	\$ 32,901	6%
Sunday, Wednesday, & Special Services	\$ 35,689	7%
Adult Education & Events	\$ 14,306	3%
Youth Ed, Chaplains, Retail Sales, Life Events	\$ 8,154	2%
Personnel	\$276,170	54%
Community Giving	\$ 18,500	4%
Total December YTD Expense	\$509,857	100%

Spiritual Life Center Month of April 2023

Total Income: \$40,045

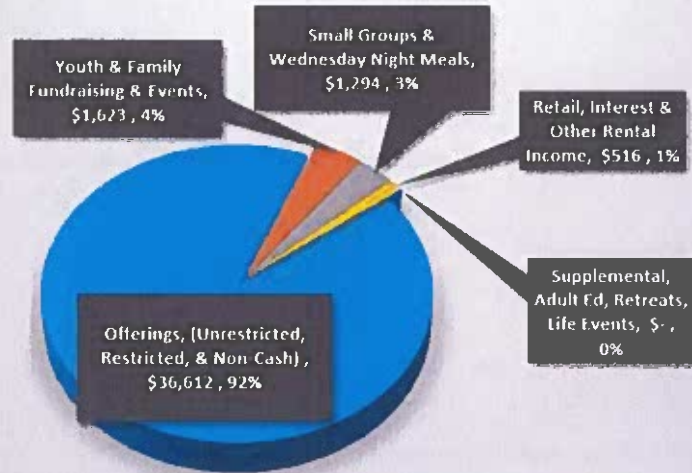
Total Expense: \$40,991*

Total Net Ordinary Income
Loss: (\$946) **

*Includes \$1.5k Community
Giving (\$500 to Unity
Associations and \$1,000 to a
Community Partner.

** For prior year comparison,
In April 2022, our loss was
(\$7.8k) in April 2021, our loss
was (\$4,999).

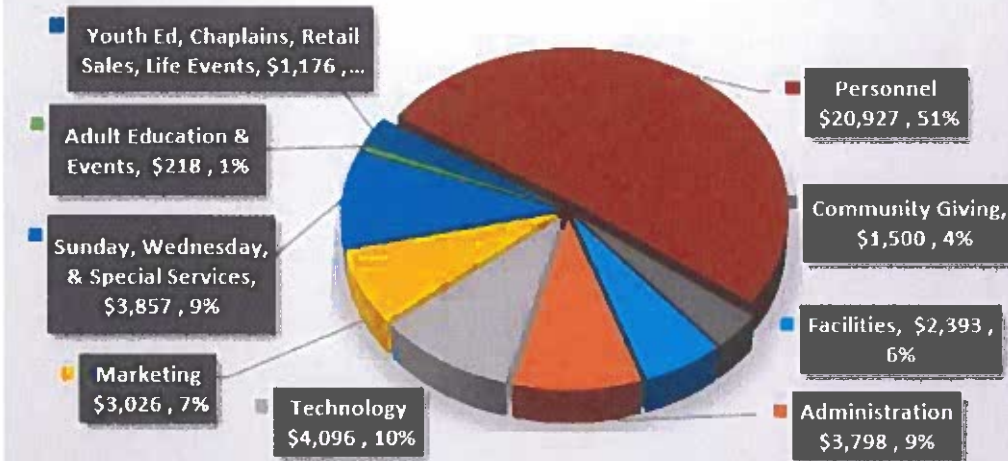
Spiritual Life Center Month of April 2023 Income



- Offerings, (Unrestricted, Restricted, & Non-Cash)
- Youth & Family Fundraising & Events
- Small Groups & Wednesday Night Meals
- Retail, Interest & Other Rental Income
- Supplemental, Adult Ed, Retreats, Life Events

SLC Month of April 2023 Income		Actual	Percent
Offerings, (Unrestricted, Restricted, & Non-Cash)	\$36,612	\$36,612	91%
Youth & Family Fundraising & Events	\$1,623	\$1,623	4%
Small Groups & Wednesday Night Meals	\$1,294	\$1,294	3%
Retail, Interest & Other Rental Income	\$516	\$516	1%
Supplemental, Adult Ed, Retreats, Life Events	\$-	\$-	0%
Total Month of April 2023 Income	\$40,045	\$40,045	100%

Spiritual Life Center Month of April 2023 Expenses



- Facilities
- Administration
- Technology
- Marketing
- Sunday, Wednesday, & Special Services
- Adult Education & Events
- Youth Ed, Chaplains, Retail Sales, Life Events
- Personnel
- Community Giving

SLC Month April 2023 Expenses		Actual	Percent
Facilities	\$2,393	\$2,393	6%
Administration	\$3,798	\$3,798	9%
Technology	\$4,096	\$4,096	10%
Marketing	\$3,026	\$3,026	7%
Sunday, Wednesday, & Special Services	\$3,857	\$3,857	9%
Adult Education & Events	\$218	\$218	1%
Youth Ed, Chaplains, Retail Sales, Life Events	\$1,176	\$1,176	3%
Personnel	\$20,927	\$20,927	51%
Community Giving	\$1,500	\$1,500	4%
Total Month of April 2023 Expenses	\$40,991	\$40,991	100%

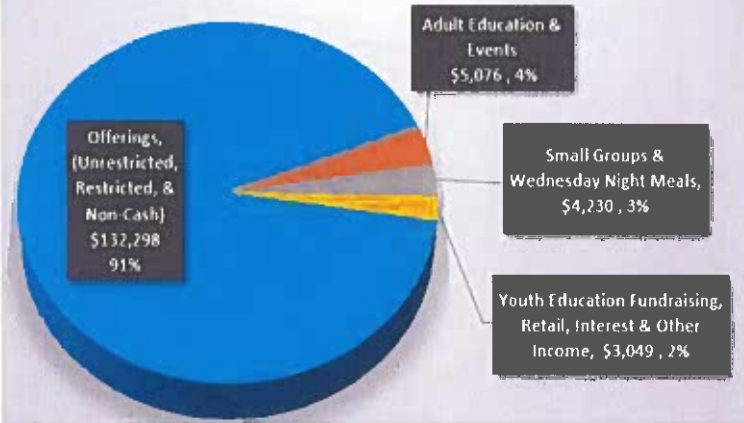
**Spiritual Life Center
Year-to-Date as of
April 30, 2023**

Total Income: \$144,653
Total Expense: \$164,715 *
Total Net Ordinary Loss: (\$20,062)**

*Includes April YTD Community Giving of \$6.8K

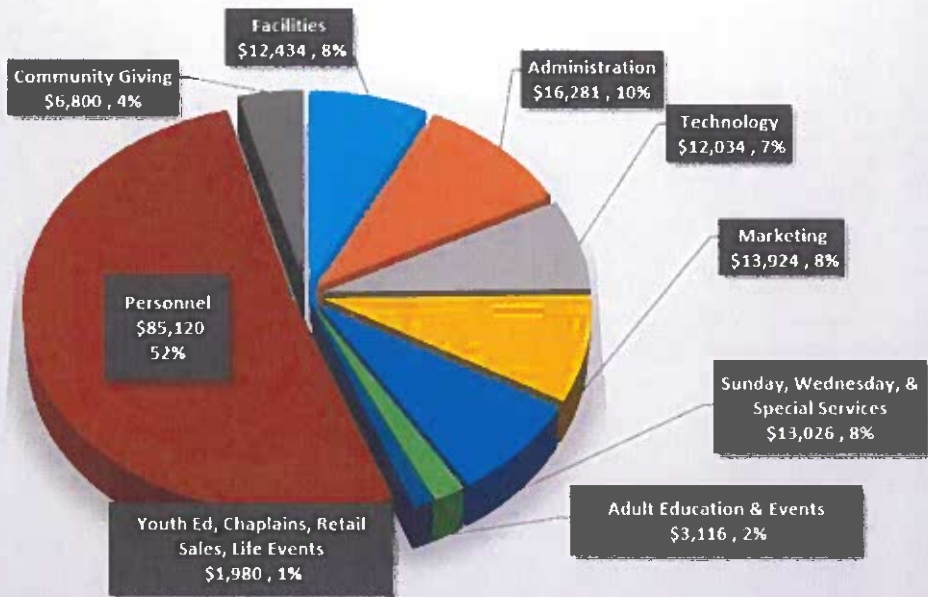
** In 2022, April YTD net ordinary income loss after Community Giving was (\$29,253). In 2021, April YTD net ordinary income loss after Community Giving was (\$16,264).

**Spiritual Life Center
April 2023 Year-to-Date Income**



SLC April 2023 Year-to-Date Income		
	Actual	Percent
Offerings, (Unrestricted, Restricted, & Non-Cash)	\$132,298	91%
Adult Education & Events	\$ 5,076	4%
Small Groups & Wednesday Night Meals	\$ 4,230	3%
Youth Education Fundraising, Retail, Interest & Other	\$ 3,049	2%
Total April 2023 Year-to-Date Income	\$144,653	100%

**Spiritual Life Center
April 2023 Year-to-Date Expenses**



- Facilities
- Administration
- Technology
- Marketing
- Sunday, Wednesday, & Special Services
- Adult Education & Events
- Youth Ed, Chaplains, Retail Sales, Life Events
- Personnel
- Community Giving

SLC April 2023 Year-to-Date Expenses		
	Actual	Percent
Facilities	\$ 12,434	8%
Administration	\$ 16,281	10%
Technology	\$ 12,034	7%
Marketing	\$ 13,924	8%
Sunday, Wednesday, & Special Services	\$ 13,026	8%
Adult Education & Events	\$ 3,116	2%
Youth Ed, Chaplains, Retail Sales, Life Events	\$ 1,980	1%
Personnel	\$ 85,120	52%
Community Giving	\$ 6,800	4%
Total March 2023 YTD Expense	\$164,715	100%

FINANCIAL STATEMENT NOTES

APRIL 2023

Net Ordinary Income

1. Net Ordinary Income – Our loss in April after Community Giving is (\$946). In 2022, our loss was (\$7.8k) and 2021 our loss was (\$4,999).
2. Year-to-Date Net Ordinary Income – Our April YTD loss after Community Giving is (\$20,062). In 2022, April YTD loss was (\$29,253) and in 2021, April YTD loss was (\$16,264).

BALANCE SHEET (Cash Totals as of April 30, 2023)

1. 10300 – General Fund Checking Account – \$19,106.
2. 10350 – Building Fund - \$56.9k.
3. 10360 – Money Market Savings - \$0. This account was closed and merged into Regular Savings.
4. 10370 – Regular Savings (Restricted Funds for SLC Visa Limit) – same \$10k VISA limit plus interest.
5. Total Checking/Savings - \$86,771 as of April month end.
6. 11000 – Accounts Receivable - \$5,216 – Higher than normal since April 30th was a Sunday. Weekend receipts were deposited in May.

ATTENDANCE INFORMATION

2023 Wednesday Night Average: 25

2023 Monthly Attendance Averages

January 3 Week Average: 115 – Excluded 1st two weeks since they were only one service.
February 4 Week Average: 124 – Inflated slightly due to high attendance for JG event.
March 4 Week Average: 108 – Note Month of March had Severe Winter Storms
April 5 Week Average: 122 – Includes Easter
May 2 Week Average: 116 – Last two weekends of May not available at time of report.

2023 1st Timers through May 10: 47

2022 Monthly Attendance Averages

April 4 Week Average: 112
May 5 Week Average: 96
June 4 Week Average: 86
July 5 Week Average: 97
August 4 week Average: 109
September 4 Week Average: 104
October 5 Week Average: 110
November 4 Week Average: 109
December 11 & 18 Average: 113
December 4 Week Average: 98

2022 1st Timers through Dec 31: 130